



**READ THIS ENTIRE GUIDE CAREFULLY BEFORE INSTALLING BLACKWOOD SIDING.**

This installation guide applies to all Blackwood Siding profiles including shiplap, tongue & groove, square edge, and exposed fasteners siding.

**STORING THE PRODUCT**

Keep the siding in a dry and ventilated area. It should not come into direct contact with the ground and be stored at least 6" above the ground.

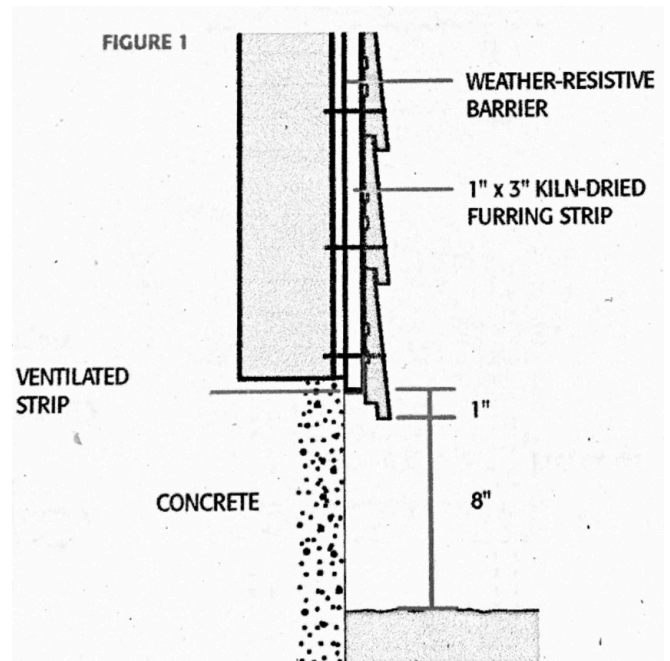
At the end of the work day, cover any unused siding to prevent damage from the elements: rain, snow, humidity and sun.

**BEFORE BEGINNING INSTALLATION**

Have appropriate fasteners and touch-up oil/stain on-hand.

The installed siding must not come in direct contact with the ground, masonry, insulation or horizontal structures. A minimum clearance of 8" from the ground, 3/4" from insulation or masonry, and 2" from horizontal structures. See Figure 1 →

Install ventilated strip with a minimum 50% opening or screening at the base of the wall to allow for drainage and uninterrupted ventilation behind the siding, and to prevent insect or rodent infestation. The ventilated strip is designed for horizontal installation and should continue around the entire building. Exterior sidings do not form a waterproof barrier; be sure to install a weather-resistive barrier such as Typar first to protect the home from water infiltration.



## **INSTALLING THE FURRING STRIPS**

Remove any materials that can block air ventilation and water drainage. This includes horizontal furring strips at the bottom of walls and around doors and windows.

Always leave a minimum 1/2" opening at the top and bottom of walls to ensure adequate air flow behind the siding across the entire span of wall.

### **VERTICAL FURRING STRIPS (for installing siding horizontally)**

Use 1"x3" kiln-dried furring strips. Nails must have a minimum penetration of 1 1/4" into the structure.

Maximum spacing of 16" centre to centre between furring strips for a horizontal siding install.

Nail furring strips every 12".

### **DOUBLE FURRING OR CROSS STRAPPING (for installing siding vertically)**

Start with vertical furring as described above.

Then install horizontal furring strips over the vertical furring strips spacing every 12".

Double furring is mandatory in Quebec. It ensures optimum product performance by allowing for continuous air ventilation and water drainage behind the siding.

We strongly recommend this method in all jurisdictions particularly when installing siding vertically over a foam insulation panels or ICF, or when the siding is dark in colour. Double furring allows for heat or moisture build behind then siding to escape easily and ensures optimal performance of the siding.

## **FASTENING THE SIDING**

Powder coated or plain hot-dipped galvanized steel or stainless steel nails with hammer cap on exposed fasteners (shiplap profile).

Stainless steel grade 316 nails and hammer cap on exposed fasteners in coastal areas.

7/16" x 2" 16 gauge, 304 stainless steel staples for tongue & groove profile.

7/16" x 2" 16 gauge, 316 stainless steel staples for tongue & groove in coastal areas.

## **SHIPLAP PROFILE SIDING WITH EXPOSED NAILS**

Use powder coated colour matched hot-dipped galvanized steel nails. In coastal areas, unstained stainless steel grade 316 nails must be used.

Coil nails; respect the minimum depth of drive and finish nails as needed with a hammer fitted with a cap.

Nails must not sink into the siding below the plane of the surface or protrude from wood. A properly sunk nail will sit flush with the wood's surface.

For manual installation, use a hammer fitted with a cap to prevent damage to nail heads and surrounding wood.

Touch up damaged nails as needed with touch-up paint strictly on nail head, not surrounding wood.

Nails must have a minimum real penetration of 1" into solid wood.

Nail every 16" centre to centre 2 fasteners across the width of face so as to secure the lap on the rabbit. Do not nail through lap or rabbit but through the 3/4" thickness of board.

## **TONGUE & GROOVE SIDING**

Only use siding staples to install tongue & groove siding. Use 2" length 7/16" crown, 16 gauge, stainless steel SUS 304 staples or larger.

Staples must be angled correctly at 30°-40° with two staples per furring strip centres accordingly.

Never use staples less than 3/4" from edge of board. Use a nail in these instances.

Staple must sit flush on the surface and not be sunk into the wood. Use pneumatic stapler with adjustable depth drive.

Ensure staples have a minimum 1" real penetration into solid wood. Make sure the siding board is firmly pressed into furring strip when stapling.

## **CORNERS**

Butt joints or moulding are recommended. Mitred corners by joining two siding boards is not recommended as over time this joint will open and become unsightly.

## **TOUCHUPS**

All cut boards/ends must be sealed/oiled before install. Carefully apply sealer/oil to just the cuts of exposed wood even if those cuts are not going to be visible. Do this before install.

## **INSTALLING SIDING HORIZONTALLY - with exposed fasteners (nails or screws)**

Install the first course of siding with exposed nails along a ventilated strip with a minimum opening of 50% or screening. This will allow proper water and heat management while also preventing certain insects and rodents from getting in behind the siding.

Alternate board lengths on the wall for a more attractive look.

Nail position - Shiplap or Channel 1" x 6" - two nails; one nail 1" from bottom of the board and one nail 1/2" under the bottom of the lap.

Nail position - Bevel 1" x 6" - one nail installed 1" from the bottom of the board.

Nail position - Bevel 1" x 8" - two nails, one nail installed 1" from bottom of the board, one nail 1" from top of board.

## **JOINTS**

Joints must be cut at 22.5° angle, then sealed with touch-up oil/sealer and always fastened to furring strip. Use two nails for 22.5° joints.

## **INSTALLING SIDING VERTICALLY**

Siding with exposed nails - install double furring / cross strapping (see Notes above).

Ensure then angle cuts at joints always point downwards.

Nail position - Shiplap or Channel 1" x 6" - two nails spaced evenly into the board (not lap) every 12" or 16" along length of board (follow local building code). Cut ends must be fastened at furring strip with two nails, cut at 22.5° pointed downwards.

Tongue & groove siding vertically - staples maybe more visible when T&G siding is installed vertically. Install double furring / cross strapping as described above.

## **JUNCTIONS**

### **Siding-Deck**

Siding must never come into direct contact with a balcony or deck.

2" space between adjacent horizontal structures.

1/2" space between the siding and the flashing to allow proper drainage and air flow to ventilate the wall

## **Dormer-Roof**

Siding should never come into direct contact with the roof. It must have a minimum vertical clearance of 2" with the roof surface. Do not caulk siding to flashing.

## **Siding-other types of siding**

Where two types of siding meet (such as siding and stone, or siding and brick etc), install flashing (min 6° slope) and leave a 1/2" space above the flashing to allow for drainage and ventilation. Never caulk.

## **TOP AND BOTTOM OF WINDOWS**

### **Top of Window**

Leave a minimum 1/2" spacing between flashing and the siding to allow for adequate drainage and air flow.

Apply caulking along the sides of windows, doors, and mouldings to prevent water and insect infiltration. Always touch-up boards before installing them.

Boards installed under windows and the bottom of boards installed above windows and doors must always be fastened with nails, not staples.

### **Bottom of Window**

Ventilation at the bottom of windows is required (ventilated strip of screening) when the window has a width of more than 4' and is located more than 4' from the first course. Leave 1/2" spacing between flashing and the siding.

## **TOP OF WALL**

It is important to allow air to circulate and for heat to escape at the top of walls. This is achieved by leaving a 1/2" space at the top of the wall and by using a ventilated strip with a minimum 50% opening, which will also prevent insects and rodents from getting in behind the siding.

## **MAINTENANCE**

Blackwood Siding requires minimal maintenance. Periodic re-oiling is required as deemed necessary to maintain the factory finish. Never clean with pressure washer.

---

Blackwood Siding Co. Ltd.

99 James St North, Tweed, Ontario K0K 3J0 | [hi@blackwoodsiding.com](mailto:hi@blackwoodsiding.com) | 613-848-4972